



Breakfast in Burma

November 10 - 22, 2021



What was the world like in a simpler time? The time described by such legendary travelers as Marco Polo, Rudyard Kipling and George Orwell. The answer lies throughout Burma. Its attractions tell stories: tales of royalty & colonialism; Buddhism & ancient art forms; village life & traditional values; and fabled places like Rangoon & Mandalay. Some are exotic or serene. Others are intriguing or nostalgic. All are enchanting. All are unforgettable. All will leave you jaw in hand, speechless and amazed that such a gracious place still exists. This magical country promises wonderful cultural experiences, and delivers even more than it promises.

Tour Highlights

- Sunrise over 11th century Bagan temples from a hot air balloon (optional)
- Inle Lake's charms and fishing villages in a magical world afloat
- Timeless scenes from daily life in the pristine Burmese countryside
- Hospitality and Buddhist spirituality of the world's most gracious people
- Resplendent 2500 year old golden Shwe Da Gon Pagoda
- Breakfast in Burma *

Tour price per person

Double occupancy: US\$3,900

Single occupancy: US\$4,700

Optional hot air balloon ride: US\$300

* Why "Breakfast in Burma?" Because it's our favorite thing in the world. What makes it so special? Exotic settings, early morning dew, attentive but unobtrusive hospitality, and organic foods, freshly harvested and eaten so close to the source. Sunrise casting promise on a new day of discovery. The intangible feeling of waking up in Burma. It can't be described. It must be experienced.



Breakfast in Burma

November 10 - 22, 2021

Tour Price

The tour price, based on a minimum of 8 participants, **includes** 12 nights of boutique hotel accommodations, all meals from dinner on November 10 through breakfast on November 22, domestic flights within Burma, ground transportation, entrance fees, gratuities, and the services of a tour director and English-speaking local guide. The tour price **excludes** flights to Burma, overnight en route (if required), visa, hot air balloon flight (optional) and alcoholic beverages.

Deposit

A deposit of US\$500 is required to reserve a place on the tour. The balance is due 90 days prior to departure.

Cancellation Policy

In accordance with hotel and airline policies, cancellation charges may apply.

Hot Air Balloon Flight

You may sign up for a hot air balloon flight for an additional fee of \$300. There is a \$300 surcharge for passengers over 250 lbs. If the flight is cancelled due to weather, you will receive a full refund.

International Airline Tickets

You must book and purchase your own airline tickets to Burma.

Passport and Visa Requirement

A passport with 6 months validity and a visa are required to enter Burma. You will receive application instructions four months prior to departure.

Meet Our Team

The tour is organized and led by Debbie Jefkin-Elnekave. Her extensive travels in Burma, knowledge of the customs, and profound appreciation for the people, ensure a very rewarding journey. To learn more about Debbie, please visit www.uncommonjourneys.biz and click on Our Story. "Daniel" Sae Woon Sone is our local guide who makes the tour eight million times more enjoyable for everyone. Debbie and Daniel have worked as a team since 1998.

Waiver of Liability

Uncommon Journeys assumes no responsibility for accidents or injury to individuals participating in the tour. You will be required to read, accept and sign an agreement to release Uncommon Journeys from liability.

Preserving the Burmese Culture

We are proud of our 23 year track record of offering tours to the magical land of Burma. We were among the first and have operated continuously, through thick & thin, since 1998. It has been, and remains, our passion. Recent growth in tourism has been a mixed blessing. Well-intentioned but misguided tourists have taught the people to beg for money, candy, pens, toys, lipstick and trinkets. These handouts belittle the people, erode the local culture, perpetuate a negative stereotype of patronizing foreigners, and create reliance on begging. They also encourage parents to exploit their children by sending them out to beg from tourists instead of going to school. We are determined that our presence will not endanger the gracious Burmese way of life. In order to preserve the culture and dignity of the people, we enforce a strict policy against handouts. If you feel it would be difficult to comply with our policy, you should reconsider before signing up for the tour. On the other hand, if you share our philosophy of sustainable tourism and our commitment to preserving this gentle culture and dignified way of life, we look forward to sharing our love of Burma and the trip of a lifetime with you.





Breakfast in Burma

November 10 - 22, 2021

Day 1 | Wednesday, November 10 | Arrival in Mandalay

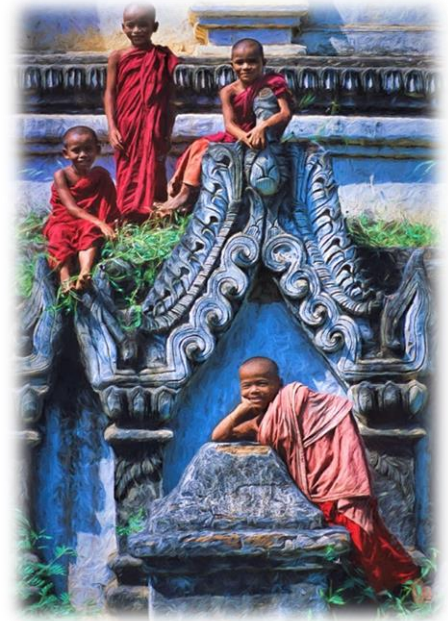
Transfer to hotel and afternoon at leisure.

Day 2 | Thursday, November 11 | Mandalay

Today's exploration includes Mahamuni Pagoda, where Burma's most revered Buddha statue glistens with tons of gold leaf that worshippers have burnished onto its body; a gold leaf workshop; a Buddhist convent; the intricately carved Shwe Nan Daw Monastery; and Kuthodaw, comprised of 729 marble tablets inscribed with the *tripitaka* (Buddhist scriptures).

Day 3 | Friday, November 12 | Mandalay

The Ayerwaddy riverbank offers a memorable glimpse into daily life in Mandalay. There we board our private boat and cast off for Mingun and its attractions: the monumental Mingun Temple, the world's largest bell, and the impressive Hsinbyume Pagoda. This afternoon, the Buddha carving pavilions amaze, as does the U-Bein Bridge, the longest teak bridge in the world.



Day 4 | Saturday, November 13 | Mandalay → Bagan

An early morning flight takes us to Bagan, a paragon of living history and spirituality. Since the 11th century, Buddhist pilgrims have erected pagodas here, in hopes of achieving nirvana. Still today thousands of shrines glorify the landscape, pushing their way gracefully toward the sky as if joined in one majestic prayer. They stand as a monument to Buddhist devotion, their grandeur undiminished after a thousand years. Today we'll explore some of these architectural treasures.

Day 5 | Sunday, November 14 | Bagan

Weather permitting, begin the day with an optional hot air balloon flight, followed by several cottage industry workshops, including lacquerware, which is celebrated the world over for its beauty and delicacy. This evening's entertainment is a marionette show, a centuries old, highly esteemed art form.

Day 6 | Monday, November 15 | Bagan

Today we explore the countryside and villages surrounding Bagan, and stop for lunch at the lovely Mt. Popa Resort.

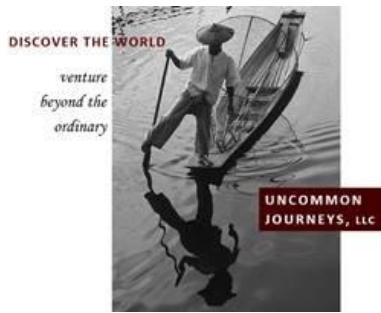
Day 7 | Tuesday, November 16 | Bagan → Pindaya

Fly to Heho and drive to the mountain village of Pindaya. This afternoon, treat yourself to a massage or facial at the hotel's spa. It's basic but luxurious in its own unique, humble, rustic way.



“This is Burma...

...and it is quite unlike any land you know about.” Rudyard Kipling



Breakfast in Burma

November 10 - 22, 2021



Day 8 | Wednesday, November 17 | Pindaya

The Pindaya Caves are awe-inspiring, with more than 9000 Buddha statues proffered by pilgrims since the 16th century. Legend insists that if you persevere far enough into the cave you'll come to Bagan.

Day 9 | Thursday, November 18 | Pindaya → Inle Lake

Prepare to be enchanted as we drive to Inle Lake, a world unto itself. Charming Intha villages are untouched by modern intrusions, perched atop stilts, in complete harmony with the environment. The people go about their idyllic life of tending floating gardens, and fishermen employ a graceful, one-legged rowing technique that is unique in all the world.

Days 10 & 11 | Inle Lake

Friday, November 19

Saturday, November 20

Our exploration includes a canal tour, 17th century Inthein ruins, Phaung Daw Oo Pagoda, Nga Phe Kyaung Monastery, a silk-weaving

workshop, the local market, and whatever daily life scenes captivate our attention. There are sure to be many.



Day 12 | Sunday, November 21 | Inle Lake → Yangon

Fly to Yangon and end our tour at the resplendent 2,500 year old Shwe Da Gon Pagoda, the most sacred of all sacred sites in Burma.

Day 13 | Monday, November 22 | Departure

"They say that beyond all countries you hear Burma calling.

And it is named the land of regrets, because

People who have been there

Are never quite the same afterwards.

There remains always in their hearts a tiny ache of regret

For the land that they have left."

Geraldine Edith Mitton

